



2013-14 WOMEN'S GOLF UNIVERSITY OF WASHINGTON

Athletic Communications • Box 354070 • Graves Hall • Seattle, WA 98195 • (206) 790-6368 • (206) 543-5000 fax

SID Contact: Ricky Brackett (rbrack@uw.edu)

www.GoHuskies.com

NCAA Championships Release

May 15, 2014

UW Schedule of Events

Tuesday, May 20 (all times are PST)

10:55 a.m. 1st Round off No. 1 (UW, Ala., S. Car.)

Wednesday, May 21

6:25 a.m. 2nd Round off No. 10 (UW, Ala. S.Car)

Thursday, May 22

TBD Determined by standings

Friday, May 23

TBD Determined by standings

Following The Huskies

There are numerous ways fans can follow Washington Husky women's golf, including on GoHuskies.com, Twitter and Facebook.

GoHuskies.com: <http://www.gohuskies.com>

Facebook: <http://www.facebook.com/UWWomensGolf>

Twitter: <http://twitter.com/UWATHletics>
http://twitter.com/UW_WGolf

Washington Quick Facts

SCHOOL INFORMATION

Institution:University of Washington
Location:Seattle, Wash.
Enrollment: 42,000 (31,474 undergraduates)
Founded:Nov. 4, 1861
Nickname:Huskies
Affiliation:NCAA Division I
Colors:Purple (PMS 5265) and Gold (PMS 7502)
Mascot:Dubs (live) & Harry the Husky (costumed)
Conference:Pacific-12
President:Michael Young
Athletic Director:Scott Woodward
Website:www.gohuskies.com

WOMEN'S GOLF INFORMATION

Coach: Mary Lou Mulflur, 31st year (Washington, '80)
Asst. Coach:Andrea VanderLende, 5th year (Florida, '05)
Volunteer Assistant..... David Elaimy, 4th year (Washington)
NCAA Regional Appearances:22
Best Finish:2nd, 2014
Best Individual Finish: 1st, Paige Mackenzie, 2006 & Dodie Mazzuca, 1997
NCAA Championship Appearances:12 (last in 2011)
Best Finish:6th, 2004 & 2006
Best Individual Finish:8th, P. Mackenzie, 2006

UW HEADS TO TULSA FOR NCAA FINALS

The Dawgs look for their first national title in program history.

THE DAWGS AT THE NCAA CHAMPIONSHIPS

The Huskies will compete in their 12th NCAA Championships in program history, May 20-23, at the Tulsa Country Club in Tulsa, Oklahoma. The Dawgs will look to improve on an all-time best finish of sixth place, accomplished in both 2004 and 2006. Washington enters the week at the sixth-ranked team in the country after finishing second at the NCAA West Regional last week in Suncadia, Wash. The 24-team NCAA field includes 19 teams ranked in the top-25, including seven from the Pac-12. This is the first NCAA Finals for the Dawgs since 2011 when the team finished 16th. Kelli Bowers is the only remaining player left from that squad. She led the Huskies with a T-26th as a freshman and now returns for her second NCAA's.

HUSKY LINEUP

Mary Lou Mulflur will send a talented and experienced group to Tulsa to play in the NCAA Championships. It will be the same lineup the placed second at Regionals and sixth at the Pac-12 Championships. Four of the Husky players are ranked in the top-60 in the golfstat.com rankings, including Jennifer Yang and SooBin who are currently 19th and 21st. Kim has been the Huskies hottest player, finishing as the NCAA West Regional runner-up in her last tournament. She won the final regular season event, the Silverado Invitational and then led the Huskies with a 13th-place finish at Pac-12's. Yang is second on the team with six top-10's and was the Dawgs top finisher in four-straight tournaments at one point this spring. Also with national rankings are Charlotte Thomas and Ying Luo. Thomas is currently ranked 28th and is third on the team with a 72.85 scoring average. She is coming off a final round at regionals where she was the only player to break par on a difficult windy day. Luo is ranked 66th and has three top-10 finishes for the Huskies this season. She made the NCAA Championships last season as an individual, placing T-50th. Bowers is the only Husky with NCAA team experience and is coming off a T-39th at regionals.

UW IN 2013-14

Washington has been consistently in contention this season, including two tournament victories. The Dawgs opened the fall season with a historic 50-stroke victory at the Topy Cup in Japan, but then did not win again until mid-April with an impressive 13-stroke win at the Silverado Invitational against a field that included top-ranked USC. Overall, the Dawgs have eight top-three finishes, including last week's runner-up spot at the NCAA West Regional. Individually, Thomas opened the season with a win at the Topy Cup in Japan, while Kim won at the Silverado Invitational. In addition to the wins, Kim has two runner-ups, Yang has a pair of third-place finishes and Luo also has a third.

THE COURSE

Tulsa Country Club's original 18 hole golf course was designed by A.W. Tillinghast in 1920. The course was redesigned and opened on July 1st, 2011 by Rees Jones. For the NCAA Championships, the course will play to a par 70 and measure 6,194 yards.

LIVE SCORING

Live scoring will be available on the internet at www.golfstat.com. Tournament recaps, results and post-round information also can be found at www.gohuskies.com.

NCAA Field:

1. USC
2. UCLA
3. Duke
4. South Carolina
5. Arizona State
6. WASHINGTON
7. Oklahoma
8. Vanderbilt
10. Alabama
11. Arizona
12. Stanford
15. Northwestern
17. NC State
18. Virginia
20. Michigan State
21. Florida
22. Ohio State
24. Iowa State
25. California
- Campbell
- Kansas
- Mississippi State
- Texas A&M
- Tulane

Huskies In The Rankings

	Golfstat.com	Golfweek.com
Team	6	5
SooBin Kim	19	14
Charlotte Thomas	28	23
Ying Luo	66	55
Jennifer Yang	21	19

2013-14 Washington Women's Golf Results

2013-14 Tournament Summary

Date	Tournament	Rd-1	Rd-2	Rd-3	To Par	Total	Finish	Low Player
Sept. 10-12	Topy Cup	282	278	280	-24	840	1st	Charlotte Thomas (-7)
Oct. 8-9	Edean Ihlanfeldt Invitational	301	289	300	+26	890	2nd	SooBin Kim (+3)
Oct. 25-27	Stanford Intercollegiate	282	284	285	-1	851	3rd	Charlotte Thomas (-4)
Nov. 4-5	Pac-12 Preview	282	286	301	-7	869	3rd	SooBin Kim (-2)
Feb. 9-11	Northrop Gumman Challenge	292	295	294	+29	881	T5th	Ying Luo (+3)
Feb. 23-25	Allstate Sugarbowl Intercollegiate	299	289	291	+15	879	11th	Jennifer Yang (+1)
Mar. 3-4	Bruin Wave Invitational	299	301	311	+47	911	6th	Jennifer Yang (+5)
Mar. 24-26	Anuenue Spring Break Invitational	290	290	299	+15	879	2nd	Jennifer Yang (-1)
Apr. 4-6	PING ASU Invitational	284	291	284	-5	859	T-2nd	Jennifer Yang (-2)
Apr. 14-15	Silverado Invitational	289	292	280	-3	861	1st	SooBin Kim (-9)
Apr. 25-27	Pac-12 Championship	290	293	301	+20	884	6th	SooBin Kim (+4)
May 8-10	NCAA West Regional	288	292	297	+13	877	2nd	SooBin Kim (-1)

2013-14 Individual Statistics

Player	Events	Rounds	Strokes	Avg.	Low Round	Low 54-Hole	Top Finish	Top 10's	60s	Rounds -Par
SooBin Kim	11	33	2,379	72.09	67	207	1	7	6	14
Jennifer Yang	10	30	2,174	72.47	69	210	3	6	4	11
Charlotte Thomas	11	33	2,404	72.85	68	209	1	4	5	10
Ying Luo	11	33	2,434	73.76	68	212	T3	3	3	8
Kelli Bowers	7	21	1,583	75.38	70	218	T13	0	0	3
Eimi Koga	5	15	1,129	75.27	67	220	T7	1	2	2
Cyd Okino	4	12	914	76.17	71	219	9	1	0	2
Monica Huang	1	3	244	81.33	77	244	T57	0	0	0

2013-14 Husky Roster

Name	Year	Exp.	Hometown/Last School
Kelli Bowers	SR	3V	Chelan, Wash./Chelan
Eimi Koga	FR	HS	Honolulu, Hawai'i, Moanalua
SooBin Kim	JR	2V	Donghae, South Korea/Gleneagle Secondary School (Coquitlam, B.C.)
Ying Luo	SO	1V	Shenzhen, China/Nanshan
Cyd Okino	JR	2V	Honolulu, Hawai'i/Punahou
Charlotte Thomas	SO	1V	Surrey, England/United World College of SE Asia (Singapore)
Jennifer Yang	JR	2V	Busan, South Korea/Gleneagle Secondary School (Coquitlam, B.C.)

Coaching Staff

Mary Lou Mulflur – Head Coach

Andrea VanderLende – Assistant Coach

David Elaimy – Volunteer Assistant Coach



SooBIN KIM

Junior
Donghae, South Korea
Gleneagle Secondary School
(Coquitlam, British Columbia)
#14 Golfweek/#17 Golfstat

2013-14 HIGHLIGHTS AND NOTES:

- Her 72.09 stroke leads the Dawgs this season.
- Leads the team in Top-10 finished this season with seven.
- Finished as the NCAA West Regional runner-up with a 1-under 215.
- Placed first overall at the Silverado Invitational where she shot a (-9) 207, which was the best 54-hole score UW recorded this season.
- Led the Huskies with a T-13th-place finish at the Pac-12 Championships.
- Earned Second Team All-Pac12 honors.
- Last season was named First Team All-Pac-12 and Second TEam WGCA All-American.
- Won the 2012 Edean Ihlanfeldt Invitational with a tournament record of 11-under 205.



KIM'S CAREER STATISTICS

YEAR	ROUNDS	STROKES	AVERAGE	LOW
2011-12	34	2501	73.55	66
2012-13	32	2302	71.94	67
2013-14	33	2379	72.09	67
TOTALS	99	7182	72.54	66

Career Best Finish: 1st, 3 times, last at Silverado Invitational Apr. 14-15 2014

Career Top-10 Finishes: 19

Career Best 54-Hole Score: 200, Stanford Intercollegiate, Oct. 14-16, 2011

Career Best 18-Hole Score: 66 (-5), Stanford Intercollegiate, Oct. 14, 2011

KIM'S 2013-14 SEASON STATS

Date	Score	Tournament	Overall Place	Place on Team
Sept. 10-12	210	Topy Cup	2nd of 30	2nd of 5
Oct. 8-9	219	Edean Ihlanfeldt Invitational	4th of 67	1st of 5
Oct. 25-27	212	Stanford Intercollegiate	T-11th of 90	3rd of 5
Nov. 4-5	217	Pac-12 Preview	T-8th of 60	1st of 5
Feb. 9-11	222	Northrop Grumman Challenge	T-25th of 87	3rd of 5
Feb. 23-25	223	Allstate Sugarbowl Intercollegiate	T-53rd of 90	T-4th of 5
Mar. 24-26	219	Anuenue Spring Break Classic	T-6th of 88	3rd of 5
April 4-6	215	PING/ASU Invitational	T-10th of 81	2nd of 5
April 14-15	207	Silverado Invitational	1st of 75	1st of 5
April 25-27	220	Pac-12 Championships	T-13th of 54	1st of 5
May 8-10	215	NCAA West Regionals	T-2nd of 126	1st of 5



YING LUO

Sophomore
Shezhan, China
Nanshan
#55 Golfweek/#66 Golfstat



2013-14 HIGHLIGHTS AND NOTES:

- Placed T-17th at the Pac-12 Championships.
- Finished T-39th at the NCAA West Regionals
- Recorded a career low (-4) 68 at the Topy cup on September 11, 2013.
- Her 73.76 stroke average ranks fourth on the team.
- Shot a career best (-4) 212 at the Topy Cup on September 10-12.
- Named All-Pac-12 Honorable Mention.
- Qualified for the 2013 NCAA Championships as an individual, placing T-50th.

LUO'S CAREER STATISTICS

YEAR	ROUNDS	STROKES	AVERAGE	LOW
2012-13	29	2168	74.76	70
2013-14	33	2434	73.47	68
TOTALS	62	4600	74.19	68

Career Best Finish: T3rd, Edean Ihlanfeldt Invitational, Oct. 8-10, 2012

Career Top-10 Finishes: 4

Career Best 54-Hole Score: 212, Topy Cup, September 10-12, 2013

Career Best 18-Hole Score: 68 (-4), Topy Cup, Sept. 12, 2013

LUO'S 2013-14 SEASON STATS

Date	Score	Tournament	Overall Place	Place on Team
Sept. 10-12	212	Topy Cup	T-3rd of 30	T-3rd of 5
Oct. 8-9	224	Edean Ihlanfeldt Invitational	T-14th of 30	T-3rd of 5
Oct. 25-27	220	Stanford Intercollegiate	T-39 of 90	4th of 5
Feb. 9-11	216	Northrop Grumman Challenge	T-8th of 87	1st of 5
Feb. 23-25	223	Allstate Sugarbowl Intercollegiate	T-53rd of 90	T-4th of 5
Mar. 3-4	234	Bruin Wave Invitational	T-42nd of 90	4th of 5
Mar. 24-26	217	Anuenue Spring Break Classic	4th of 88	2nd of 5
April 4-6	218	PING/ASU Invitational	T-20th of 81	T-3rd of 5
April 14-15	219	Silverado Invitational	T-13th of 75	3rd of 5
April 25-27	221	Pac-12 Championships	T-17th of 54	T-2nd of 5
May 8-10	230	NCAA West Regional	T-39th of 126	T-4th of 5



Kelli Bowers

Senior
Chelan, Wash.
Chelan HS



2013-14 HIGHLIGHTS AND NOTES:

- Is the only senior on the current roster
- Only current UW player that was part of the 2011 team that placed seventh at the NCAA Championships.
- Earned a T-26th at the 2011 NCAA Championships.
- Tied her career low (-3) 70 at the Pac-12 Preview on November 4, 2013
- Best finish came at the Pac-12 Preview where she placed T-13th
- Placed T-25th at the Pac-12 Championships, helping the Dawgs to a sixth-place finish.
- Placed T-39th at the NCAA West Regionals.

BOWERS' CAREER STATISTICS

YEAR	ROUNDS	STROKES	AVERAGE	LOW
2010-11	35	2669	76.26	70
2011-12	34	2588	76.12	71
2012-13	9	672	74.66	71
2013-14	21	1583	75.38	70
TOTALS	96	7282	75.85	70

Career Best Finish: 2nd, Gonzaga Spring Invitational, Apr. 10, 2011

Career Top-10 Finishes: 3

Career Best 54-Hole Score: 217, Oregon State Invitational, Sept. 17-18, 2012

Career Best 18-Hole Score: 70 (-1), Pac-10/SEC Challenge, Nov. 5, 2010 & 70 (-3), Pac-12 Preview, Nov. 4, 2013

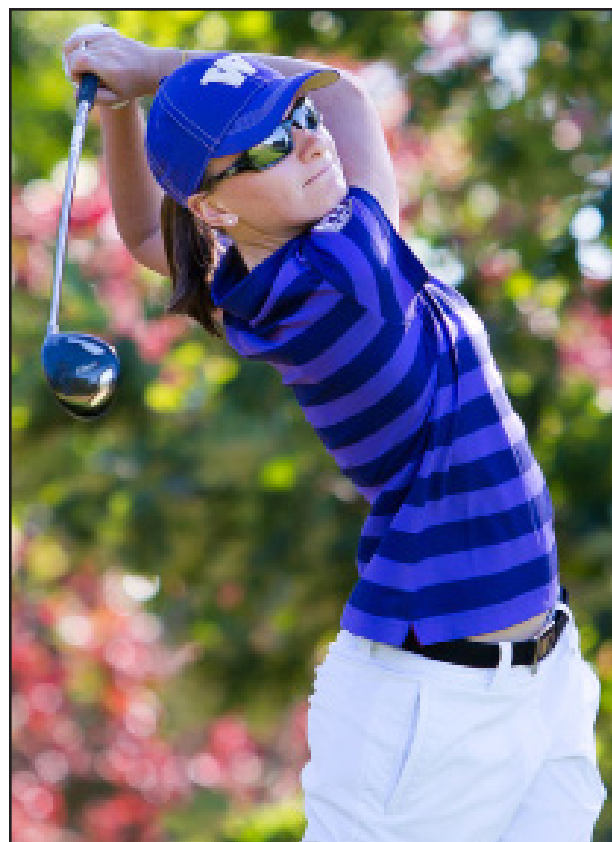
BOWERS' 2013-14 SEASON STATS

Date	Score	Tournament	Overall Place	Place on Team
Nov. 4-5	218	Pac-12 Preview	T-13th of 60	T-2nd of 5
Feb. 9-11	231	Northrop Grumman Challenge	T-63th of 87	5th of 5
Mar. 24-26	228	Anuenue Spring Break Classic	T-26th of 88	4th of 5
April 4-6	221	PING/ASU Invitational	T-33rd of 81	5th of 5
April 14-15	231	Silverado Invitational	T-46th of 75	5th of 5
April 25-27	220	Pac-12 Championships	T-25th of 54	4th of 5
May 8-10	215	NCAA West Regionals	T-39th of 126	T-4th of 5



CHARLOTTE THOMAS

Sophomore
Surrey, England
United World College of SE Asia
(Singapore)
#28 Golfweek/#34 Golfstat



2013-14 HIGHLIGHTS AND NOTES:

- Shot a season low 209 twice, once at the Topy cup on September 10-12, 2013 and once at the Stanford Intercollegiate on October 25-27, 2013.
- Finished first overall for the second time in her career at the Topy Cup on September 10-12.
- Placed sixth at the NCAA West Regional and was the only player to break par in the final round with a 1-under 71.
- Placed T-17th at the Pac-12 Championships.
- Earned Second Team All-Pac-12 honors.
- First Husky golfer to ever win in their collegiate debut, taking medalist honors at the Oregon State Invitational.
- Born in Surrey, England, moved to Singapore as a middle schooler and graduated from high school there.

THOMAS' CAREER STATISTICS

YEAR	ROUNDS	STROKES	AVERAGE	LOW
2012-13	32	2327	72.72	69
2013-14	33	2404	72.90	68
TOTALS	65	4731	72.78	68

Career Best Finish: 1st, Oregon State Invitational, Sept. 17-18, 2012, Topy Cup, Sept. 10-12, 2013

Career Top-10 Finishes: 11

Career Best 54-Hole Score: 209, Topy Cup, Sept. 10-12, 2013, Stanford Intercollegiate, Oct. 25-27

Career Best 18-Hole Score: 68, Stanford Intercollegiate, Oct. 25, 2013

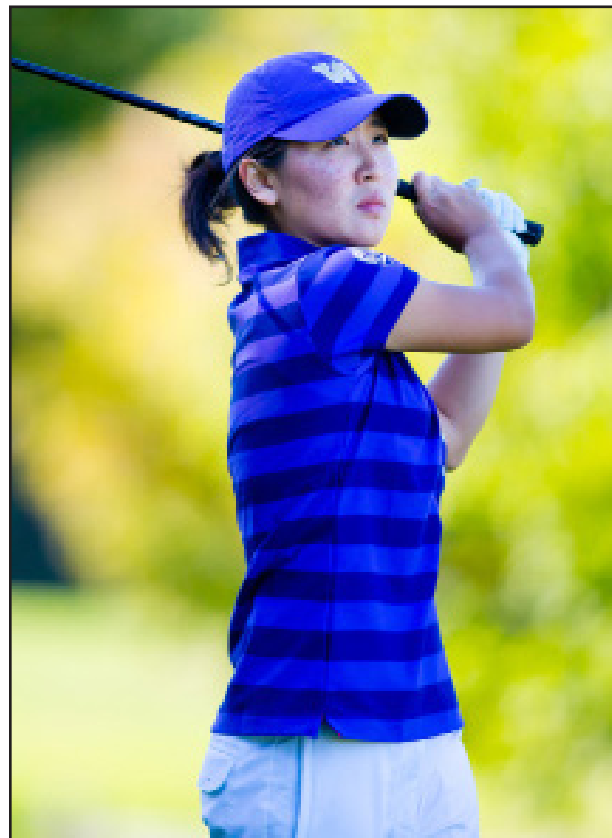
THOMAS' 2013-14 SEASON STATS

Date	Score	Tournament	Overall Place	Place on Team
Sept. 10-12	209	Topy Cup	1st of 30	1st of 5
Oct. 8-9	224	Edean Ihlanfeldt Invitational	T-14th of 67	T-3rd of 5
Oct. 25-27	209	Stanford Intercollegiate	T-5th of 90	1st of 5
Nov. 4-5	218	Pac-12 Preview	T-13th of 60	T-2nd of 5
Feb. 9-11	225	Northrop Grumman Challenge	T-35th of 87	4th of 5
Feb. 23-25	221	Allstate Sugarbowl Intercollegiate	T-45th of 90	3rd of 5
Mar. 3-4	226	Bruin Wave Invitational	T-18th of 90	2nd of 5
April 4-6	218	PING/ASU Invitational	T-20th of 81	T-3rd of 5
April 14-15	216	Silverado Invitational	T-9th of 75	2nd of 5
April 25-27	221	Pac-12 Championships	T-17th of 54	T-2nd of 5
May 8-10	217	NCAA West Regional	6th of 126	2nd of 5



JENNIFER YANG

Junior
Busan, South Korea
Gleneagle Secondary School
(Coquitlam, British Columbia)
#19 Golfweek/#21 Golfstat



2013-14 HIGHLIGHTS AND NOTES:

- Placed first on the team in four-straight tournaments this season.
- Finished in the Top-10 six times.
- Best finish of the season came in the Anuenue Spring Break Classic on March 24-26, 2014 where she placed third.
- Placed seventh at the NCAA West Regionals.
- Named Second Team All-Pac-12.
- Ranks second on the Dawgs with a 72.47 scoring average.
- Won back-to-back British Columbia Junior Championships in 2010 and 2011.
- Graduated from Gleneagle Secondary School in Coquitlam, B.C., the same school as teammate SooBin Kim.

YANG'S CAREER STATISTICS

YEAR	ROUNDS	STROKES	AVERAGE	LOW
2011-12	34	2553	75.09	69
2012-13	29	2168	74.76	67
2013-14	30	2174	72.44	69
TOTALS	93	6895	74.13	67

Career Best Finish: T2nd, Edean Ihlanfeldt Invitational, Oct. 3-5, 2011

Career Top-10 Finishes: 10

Career Best 54-Hole Score: 210, Stanford Intercollegiate, Oct. 25-27, 2013

Career Best 18-Hole Score: 67 (-5), PING/ASU Invitational, April 12, 2013

YANG'S 2013-14 SEASON STATS

Date	Score	Tournament	Overall Place	Place on Team
Sept. 10-12	212	Topy Cup	T-3rd of 30	T-3rd of 5
Oct. 25-27	210	Stanford Intercollegiate	T-7th of 90	2nd of 5
Nov. 4-5	220	Pac-12 Preview	T-18th of 60	4th of 5
Feb. 9-11	219	Northrop Grumman Challenge	T-15th of 87	2nd of 5
Feb. 23-25	217	Allstate Sugarbowl Intercollegiate	T-22nd of 90	1st of 5
Mar. 3-4	221	Bruin Wave Invitational	T-10th of 90	1st of 5
Mar. 24-26	215	Anuenue Spring Break Classic	3rd of 88	1st of 5
April 4-6	214	PING/ASU Invitational	T-8th of 81	1st of 5
April 25-27	228	Pac-12 Championships	T-37th of 54	5th of 5
May 8-10	218	NCAA West Regionals	7th of 126	3rd of 5

2013-14 TOURNAMENT STATS OF OTHER UW INDIVIDUALS



EIMI KOGA

Freshman

Honolulu, Hawai'i (Moanalua)

2013-14 Tournament Results

Date	Score	Tournament	Overall Place	Place on Team
Oct. 8-9	223	Edean Ihlanfeldt Invitational	T-7th of 67	2nd of 5
Feb. 23-25	220	Allstate Sugarbowl Intercollegiate	T-37th of 90	2nd of 5
Mar. 3-4	230	Bruin Wave Invitational	T-29th of 90	3rd of 5
Mar. 24-26	234	Anuenue Spring Break Classic	T-55th of 88	5th of 5
April 14-15	222	Silverado Invitational	T-19th of 75	4th of 5



CYD OKINO

Junior

Honolulu, Hawai'i (Punahou)

2013-14 Tournament Results

Date	Score	Tournament	Overall Place	Place on Team
Sept. 10-12	219	Topy Cup	9th of 30	5th of 5
Oct. 25-27	225	Stanford Intercollegiate	T-54th of 90	5th of 5
Nov. 4-5	224	Pac-12 Preview	T26th of 60	5th of 5
Mar. 3-4	246	Bruin Wave Invitational	T-70th of 90	5th of 5

COACH MARY LOU MULFLUR - 31ST YEAR (WASHINGTON, 1980)



In the history of the Husky women's golf team, two individuals stand out as the cornerstones for the program. The first is Edean Ihlanfeldt, the namesake of the Huskies' annual fall tournament. She was Washington's first coach, starting the program in 1974-75. So dedicated to seeing women have an opportunity to compete on the intercollegiate level, Ihlanfeldt never accepted a paycheck for her efforts; funneling her salary back into the program. The second is current head coach Mary Lou Mulflur, who is in her 31st season directing the Huskies.

A player for Ihlanfeldt, Mulflur's passion and commitment to Husky golf makes her former mentor proud. Mulflur's dedication, teaching and coaching skills as well as her fundraising abilities have allowed her to build the Husky program into one of the nation's most competitive teams on an annual basis.

In 30 seasons as the Husky women's golf coach, Mulflur has led the Huskies to 20 of the 21 NCAA Regionals that have been contested since their inception in 1993. She has also led her teams to ten NCAA Championships with their best finishes coming in 2004 and 2006 where the Huskies placed sixth.

For her service to Washington women's golf and college golf in general, Mulflur was inducted into the Women's Golf Coaches Association Hall of Fame in December, 2013.

Mulflur has coached several Huskies who have gone on to play professionally and/or coach at the collegiate level. Nancy Kessler-McDaniel, a member of Mulflur's first recruiting class, played at Washington from 1984 to 1988 and finished her career as an All-American in 1987-88. Kessler-McDaniel went on to play professionally and is the current head coach at Cal-Berkeley. Former Husky All-American Kelli Kamimura is currently the head coach at Washington State University.

Mulflur also coached current LPGA players Paige Mackenzie and Louise Friberg. These two former Huskies played together at the 2008 SBS Open at Turtle Bay, the first time two UW alumni have played in the same LPGA event. Mackenzie is the only player from a "Northern" school to win the individual conference title, claiming victory in 2006. She also recorded 24 top-10 finishes, ranking first in Husky women's golf team history. Friberg has 13 total top-10 finishes, ranking fourth all-time. Friberg won on the LPGA tour in 2005 in Mexico with a final round 65.

Mulflur's players have also achieved in the classroom. Mackenzie was named to the Women's Golf Coaches Association All-Scholar Team three-straight seasons and during Mulflur's tenure, 16 UW golfers have earned the distinction on 25 occasions. She also boasts a 100% graduation rate.

Twice during Mulflur's career she has been named the Pac-10 Coach of the Year. She is also the only coach who has attended every PAC-10/12 championship since the inception of a women's conference tournament in 1987.

As a student-athlete, Mulflur went on to earn four letters as a Husky. During her collegiate career she won three regular-season tournaments, including the inaugural Ihlanfeldt Invitational in 1980.

While attending Grant High School in Portland, Mulflur won state high school titles in 1974 and 1975. In October of 2004, Mulflur was inducted into the Portland Interscholastic League Hall of Fame. And in 2006 she was inducted into the Grant High School Hall of Fame. Her 1974 state championship team was inducted into the school's Hall of Fame in October, 2013. She also won the 1975 Oregon Junior Championship. Mulflur won Southern Oregon titles in 1980, 1982, 1995 and 1997 as well as the Oregon Coast Invitational in 1979, 1982, and 1990.

Mulflur has competed in five United States Golf Association events. The U.S.

MULFLUR CAREER HIGHLIGHTS

- UW has made 21 NCAA Regional appearances under Mulflur and 11 NCAA Championships.
- Players have been named NGCA All-America 10 times under Mulflur's tutelage.
- 11 first-team All-Pac-10 selections.
- UW athletes have been named Pac-10 All-Academic 28 times under Mulflur's watch.
- Pac-10 Coach of the Year in 1988 and 1999.
- Coached two NCAA Regional Champs (Paige Mackenzie, 2006 and Dodie Mazzuca, 1997).

Amateur in 1979, 1980 and 1982 and the U.S. Open in 1979 and 1980. In addition, she competed in four National Collegiate Championships. Mulflur graduated from Washington in 1980 with a degree in speech communications. She is a former vice-president of the Women's Golf Coaches Association as well as having served on numerous committees within the Association. Mulflur served on the LPGA SAFECO Classic Advisory Board for many years and along with SAFECO, developed a junior golf program for inner city girls. She also served as a member of the NCAA Women's Golf Committee from 2008 – 2011.

In 2010 Mulflur was presented with the WGCA Founders Award which recognizes a coach who has made significant contributions to the sport during the year. In October, 2013 she was also recognized by the Northwest Golf Media Association's "Local Legend" Award which honors those individuals who have distinguished themselves either as golfers or for their involvement with the golf community in the Pacific Northwest over an extended period of time.

She currently serves as a member of the NCAA Division I Women's Golf Committee. She appears annually as a celebrity player in several local golf events and fundraisers. In October of 2004, Mulflur was inducted into the PIL Hall of Fame in Portland. And in 2006 she was inducted into the Grant High School Hall of Fame. This past December she was awarded the NGCA Founders Award which honors a coach who has made significant contributions to the sport during the year.



Mary Lou Mulflur with Ying Luo

Team Bests for 2013-14

Team Best Rounds - Gross Score (Top-10)

Score	-Par	Event	Round	Date
278	-10	Topy Cup	2	Sept. 11
280	-8	Topy Cup	3	Sept. 12
280	-8	Silverado Invitational	3	April 15
282	-6	Topy Cup	1	Sept. 10
282	-2	Stanford Intercollegiate	1	Oct. 25
282	-10	Pac-12 Preview	1	Nov. 4
284	E	Stanford Intercollegiate	2	Oct. 26
284	-4	PING/ASU Invitational	1,3	April 4,6
285	+1	Stanford Intercollegiate	3	Oct. 27
286	-6	Pac-12 Preview	2	Nov. 5
288	E	NCAA West Regional	1	May 8
289	+1	Edean Ihlanfeldt Invitational	2	Oct. 8
289	+1	Allstate Sugarbowl Intercollegiate	2	Feb. 24
289	+1	Silverado Invitational	1	April 14
290	+2	Pac-12 Championships	1	April 25

Team Best Rounds - Vs. Par (Top-10)

-Par	Score	Event	Round	Date
278	-10	Topy Cup	2	Sept. 11
282	-10	Pac-12 Preview	1	Nov. 4
280	-8	Topy Cup	3	Sept. 12
280	-8	Silverado Invitational	3	April 15
282	-6	Topy Cup	1	Sept. 10
286	-6	Pac-12 Preview	2	Nov. 5
284	-4	PING/ASU Invitational	1,3	April 4,6
282	-2	Stanford Intercollegiate	1	Oct. 25
284	E	Stanford Intercollegiate	2	Oct. 26
288	E	NCAA West Regional	1	May 8
285	+1	Stanford Intercollegiate	3	Oct. 27
289	+1	Edean Ihlanfeldt Invitational	2	Oct. 8
289	+1	Silverado Invitational	1	April 14
290	+2	Anuenue Spring Break Classic	1,2	Mar. 24,25
290	+2	Pac-12 Championships	1	April 25

Team Tournaments - Gross Score

Score	-Par	Event	Date
840	-24	Topy Cup	Sept. 10-12
851	-1	Stanford Intercollegiate	Oct. 25-27
859	-5	PING/ASU Invitational	April 4-6
861	-3	Silverado Invitational	April 14-15
869	-7	Pac-12 Preview	Nov. 4-5
877	+13	NCAA West Regional	May 8-10
879	+15	Allstate Sugarbowl Intercollegiate	Feb. 23-25
879	+15	Anuenue Spring Break Classic	Mar. 24-26
881	+29	Northrop Grumman Challenge	Feb. 9-11
884	+20	Pac-12 Championships	April 25-27
890	+26	Edean Ihlanfeldt Invitational	Oct. 8-9
911	+47	Bruin Wave Invitational	Mar. 3-4

Team Tournaments - Vs. Par

-Par	Score	Event	Date
840	-24	Topy Cup	Sept. 10-12
869	-7	Pac-12 Preview	Nov. 4-5
859	-5	PING/ASU Invitational	April 4-6
861	-3	Silverado Invitational	April 14-15
851	-1	Stanford Intercollegiate	Oct. 25-27
877	+13	NCAA West Regional	May 8-10
879	+15	Allstate Sugarbowl Intercollegiate	Feb. 23-25
879	+15	Anuenue Spring Break Classic	Mar. 24-26
884	+20	Pac-12 Championships	April 25-27
890	+26	Edean Ihlanfeldt Invitational	Oct. 8-9
881	+29	Northrop Grumman Challenge	Feb. 9-11
911	+47	Bruin Wave Invitational	Mar. 3-4

Individual Bests for 2013-14

Best Rounds - Gross Score

Score	- Par	Player	Event	Date	-4	68	SooBin Kim	Silverado Invitational	April 14
67	-5	Eimi Koga	Edean Ihlanfeldt Invitational	Oct. 8	-4	68	SooBin Kim	Silverado Invitational	April 15
67	-6	SooBin Kim	Pac-12 Preview	Nov. 5	-3	69	Charlotte Thomas	Topy Cup	Sept. 11
68	-4	Ying Luo	Topy Cup	Sept. 11	-3	69	Charlotte Thomas	Topy Cup	Sept. 12
68	-4	SooBin Kim	Topy Cup	Sept. 12	-3	68	Charlotte Thomas	Stanford Intercollegiate	Oct. 25
68	-3	Charlotte Thomas	Stanford Intercollegiate	Oct. 25	-3	70	Kelli Bowers	Pac-12 Preview	Nov. 4
68	-4	SooBin Kim	Silverado Invitational	April 14	-3	69	SooBin Kim	PING/ASU Invitational	April 4
68	-4	SooBin Kim	Silverado Invitational	April 15	-3	69	Jennifer Yang	PING/ASU Invitational	April 5
69	-3	Charlotte Thomas	Topy Cup	Sept. 11	-3	69	Ying Luo	PING/ASU Invitational	April 6
69	-3	Charlotte Thomas	Topy Cup	Sept. 12	-2	70	Jennifer Yang	Topy Cup	Sept. 10
69	-2	Jennifer Yang	Stanford Intercollegiate	Oct. 26	-2	70	Ying Luo	Topy Cup	Sept. 10
69	-2	Jennifer Yang	Stanford Intercollegiate	Oct. 26	-2	70	Jennifer Yang	Topy Cup	Sept. 11
69	-4	Charlotte Thomas	Pac-12 Preview	Nov. 4	-2	69	Jennifer Yang	Stanford Intercollegiate	Oct. 26
69	-3	Jennifer Yang	PING/ASU Invitational	April 5	-2	69	Jennifer Yang	Stanford Intercollegiate	Oct. 26
69	-3	SooBin Kim	PING/ASU Invitational	April 4	-2	71	Jennifer Yang	Pac-12 Preview	Nov. 4
69	-3	Ying Luo	PING/ASU Invitational	April 6	-2	71	Jennifer Yang	Pac-12 Preview	Nov. 5
70	-2	Jennifer Yang	Topy Cup	Sept. 10	-2	70	Charlotte Thomas	Allstate Sugarbowl Intercollegiate	Feb. 24
70	-2	Ying Luo	Topy Cup	Sept. 10	-2	70	Ying Luo	Anuenue Spring Break Classic	Mar. 24
70	-2	Jennifer Yang	Topy Cup	Sept. 11	-2	70	SooBin Kim	Anuenue Spring Break Classic	Mar. 25
70	-1	Charlotte Thomas	Stanford Intercollegiate	Oct. 27	-2	70	SooBin Kim	PING/ASU Invitational	April 5
70	-1	SooBin Kim	Stanford Intercollegiate	Oct. 25	-2	70	Charlotte Thomas	PING/ASU Invitational	April 6
70	-1	Ying Luo	Northrop Grumman Challenge	Feb. 11	-2	70	Ying Luo	Silverado Invitational	April 15
70	-3	Kelli Bowers	Pac-12 Preview	Nov. 4	-2	70	SooBin Kim	NCAA West Regional	May 8
70	-2	Charlotte Thomas	Allstate Sugarbowl Intercollegiate	Feb. 24	-2	70	Jennifer Yang	NCAA West Regional	May 8
70	-2	Ying Luo	Anuenue Spring Break Classic	Mar. 24	-2	70	SooBin Kim	NCAA West Regional	May 9
70	-2	SooBin Kim	Anuenue Spring Break Classic	Mar. 25	-1	71	Charlotte Thomas	Topy Cup	Sept. 10
70	-2	SooBin Kim	PING/ASU Invitational	April 5	-1	71	SooBin Kim	Topy Cup	Sept. 10
70	-2	Charlotte Thomas	PING/ASU Invitational	April 6	-1	71	SooBin Kim	Topy Cup	Sept. 11
70	-2	Ying Luo	Silverado Invitational	April 15	-1	71	Cyd Okino	Topy Cup	Sept. 12
70	-2	SooBin Kim	NCAA West Regional	May 8	-1	71	SooBin Kim	Edean Ihlanfeldt Invitational	Oct. 8
70	-2	Jennifer Yang	NCAA West Regional	May 8	-1	71	Ying Luo	Edean Ihlanfeldt Invitational	Oct. 8
70	-2	SooBin Kim	NCAA West Regional	May 9	-1	70	Charlotte Thomas	Stanford Intercollegiate	Oct. 27
					-1	70	SooBin Kim	Stanford Intercollegiate	Oct. 25
					-1	72	SooBin Kim	Pac-12 Preview	Nov. 4
					-1	72	Cyd Okino	Pac-12 Preview	Nov. 4
					-1	71	Jennifer Yang	Allstate Sugarbowl Intercollegiate	Feb. 23
					-1	71	Eimi Koga	Allstate Sugarbowl Intercollegiate	Feb. 25
					-1	71	Jennifer Yang	Anuenue Spring Break Classic	Mar. 25
					-1	71	Ying Luo	PING/ASU Invitational	April 4
					-1	71	Kelli Bowers	PING/ASU Invitational	April 4
					-1	71	Charlotte Thomas	Pac-12 Championships	April 25
					-1	71	Charlotte Thomas	NCAA West Regional	May 10

Best Rounds - vs. Par

- Par	Score	Player	Event	Date
-6	67	SooBin Kim	Pac-12 Preview	Nov. 5
-5	67	Eimi Koga	Edean Ihlanfeldt Invitational	Oct. 8
-4	68	Ying Luo	Topy Cup	Sept. 11
-4	68	SooBin Kim	Topy Cup	Sept. 12
-4	69	Charlotte Thomas	Pac-12 Preview	Nov. 4

Individual Best Tournaments - Gross Score (54 holes)

Score	- Par	Player	Event	Date
207	-9	SooBin Kim	Silverado Invitational	April 14-15
209	-7	Charlotte Thomas	Topy Cup	Sept. 10-12
209	-4	Charlotte Thomas	Stanford intercollegiate	Oct. 25-27
210	-6	SooBin Kim	Topy Cup	Sept. 10-12
210	-3	Jennifer Yang	Stanford Intercollegiate	Oct. 25-27
212	-4	Jennifer Yang	Topy Cup	Sept. 10-12
212	-4	Ying Luo	Topy Cup	Sept. 10-12
212	-1	SooBin Kim	Stanford Intercollegiate	Oct. 25-27
214	-2	Jennifer Yang	PING/ASU Invitational	April 4-6
215	-1	Jennifer Yang	Anuenue Spring Break Classic	Mar. 24-26
215	-1	SooBin Kim	PING/ASU Invitational	April 4-6
215	-1	SooBin Kim	NCAA West Regional	May 8-10

Individual Best Tournaments - vs. Par

- Par	Score	Player	Event	Date
-9	207	SooBin Kim	Silverado Invitational	April 14-15
-7	209	Charlotte Thomas	Topy Cup	Sept. 10-12
-6	210	SooBin Kim	Topy Cup	Sept. 10-12
-4	212	Jennifer Yang	Topy Cup	Sept. 10-12
-4	212	Ying Luo	Topy Cup	Sept. 10-12
-4	209	Charlotte Thomas	Stanford intercollegiate	Oct. 25-27
-3	210	Jennifer Yang	Stanford Intercollegiate	Oct. 25-27
-2	217	SooBin Kim	Pac-12 Preview	Nov. 4-5
-2	214	Jennifer Yang	PING/ASU Invitational	April 4-6
-1	212	SooBin Kim	Stanford Intercollegiate	Oct. 25-27
-1	218	Charlotte Thomas	Pac-12 Preview	Nov. 4-5
-1	218	Kelli Bowers	Pac-12 Preview	Nov. 4-5
-1	215	Jennifer Yang	Anuenue Spring Break Classic	Mar. 24-26
-1	215	SooBin Kim	PING/ASU Invitational	April 4-6
-1	217	Ying Luo	Anuenue Spring Break Classic	Mar. 24-26
-1	215	SooBin Kim	NCAA West Regional	May 8-10

2013-14 TOURNAMENT STATS OF UW INDIVIDUALS

SooBin Kim

Date	Score	Tournament	Overall Place	Place on Team
Sept. 10-12	210	Topy Cup	2nd of 30	2nd of 5
Oct. 8-9	219	Edean Ihlanfeldt Invitational	4th of 67	1st of 5
Oct. 25-27	212	Stanford Intercollegiate	T-11th of 90	3rd of 5
Nov. 4-5	217	Pac-12 Preview	T-8th of 60	1st of 5
Feb. 9-11	222	Northrop Grumman Challenge	T-25th of 87	3rd of 5
Feb. 23-25	223	Allstate Sugarbowl Intercollegiate	T-53rd of 90	T-4th of 5
Mar. 24-26	219	Anuenue Spring Break Classic	T-6th of 88	3rd of 5
April 4-6	215	PING/ASU Invitational	T-10th of 81	2nd of 5
April 14-15	207	Silverado Invitational	1st of 75	1st of 5
April 25-27	220	Pac-12 Championships	T-13th of 54	1st of 5
May 8-10	215	NCAA West Regional	T-2nd of 126	1st of 5

Jennifer Yang

Date	Score	Tournament	Overall Place	Place on Team
Sept. 10-12	212	Topy Cup	T-3rd of 30	T-3rd of 5
Oct. 25-27	210	Stanford Intercollegiate	T-7th of 90	2nd of 5
Nov. 4-5	220	Pac-12 Preview	T-18th of 60	4th of 5
Feb. 9-11	219	Northrop Grumman Challenge	T-15th of 87	2nd of 5
Feb. 23-25	217	Allstate Sugarbowl Intercollegiate	T-22nd of 90	1st of 5
Mar. 3-4	221	Bruin Wave Invitational	T-10th of 90	1st of 5
Mar. 24-26	215	Anuenue Spring Break Classic	3rd of 88	1st of 5
April 4-6	214	PING/ASU Invitational	T-8th of 81	1st of 5
April 25-27	228	Pac-12 Championships	T37th of 54	5th of 5
May 8-10	218	NCAA West Regional	7th of 126	3rd of 5

Charlotte Thomas

Date	Score	Tournament	Overall Place	Place on Team
Sept. 10-12	209	Topy Cup	1st of 30	1st of 5
Oct. 8-9	224	Edean Ihlanfeldt Invitational	T-14th of 67	T-3rd of 5
Oct. 25-27	209	Stanford Intercollegiate	T-5th of 90	1st of 5
Nov. 4-5	218	Pac-12 Preview	T-13th of 60	T-2nd of 5
Feb. 9-11	225	Northrop Grumman Challenge	T-35th of 87	4th of 5
Feb. 23-25	221	Allstate Sugarbowl Intercollegiate	T-45th of 90	3rd of 5
Mar. 3-4	226	Bruin Wave Invitational	T-18th of 90	2nd of 5
April 4-6	218	PING/ASU Invitational	T-20th of 81	T-3rd of 5
April 14-15	216	Silverado Invitational	T-9th of 75	2nd of 5
April 25-27	221	Pac-12 Championships	T17th of 54	T-2nd of 5
May 8-10	217	NCAA West Regional	6th of 126	2nd of 5

Ying Luo

Date	Score	Tournament	Overall Place	Place on Team
Sept. 10-12	212	Topy Cup	T-3rd of 30	T-3rd of 5
Oct. 8-9	224	Edean Ihlanfeldt Invitational	T-14th of 30	T-3rd of 5
Oct. 25-27	220	Stanford Intercollegiate	T-39 of 90	4th of 5
Feb. 9-11	216	Northrop Grumman Challenge	T-8th of 87	1st of 5
Feb. 23-25	223	Allstate Sugarbowl Intercollegiate	T-53rd of 90	T-4th of 5
Mar. 3-4	234	Bruin Wave Invitational	T-42nd of 90	4th of 5
Mar. 24-26	217	Anuenue Spring Break Classic	4th of 88	2nd of 5
April 4-6	218	PING/ASU Invitational	T-20th of 81	T-3rd of 5
April 14-15	219	Silverado Invitational	T-13th of 75	3rd of 5
April 25-27	221	Pac-12 Championships	T25th of 54	T-2nd of 5
May 8-10	230	NCAA West Regional	T-39th of 126	T-4th of 5

Kelli Bowers

Date	Score	Tournament	Overall Place	Place on Team
Nov. 4-5	218	Pac-12 Preview	T-13th of 60	T-2nd of 5
Feb. 9-11	231	Northrop Grumman Challenge	T-63th of 87	5th of 5
Mar. 24-26	228	Anuenue Spring Break Classic	T-26th of 88	4th of 5
April 4-6	221	PING/ASU Invitational	T-33rd of 81	5th of 5
April 14-15	231	Silverado Invitational	T-46th of 75	5th of 5
April 25-27	224	Pac-12 Championships	T25th of 54	4th of 5
May 8-10	230	NCAA West Regional	T-39th of 126	T-4th of 5

Cyd Okino				
Date	Score	Tournament	Overall Place	Place on Team
Sept. 10-12	219	Topy Cup	9th of 30	5th of 5
Oct. 25-27	225	Stanford Intercollegiate	T-54th of 90	5th of 5
Nov. 4-5	224	Pac-12 Preview	T26th of 60	5th of 5
Mar. 3-4	246	Bruin Wave Invitational	T-70th of 90	5th of 5
Eimi Koga				
Date	Score	Tournament	Overall Place	Place on Team
Oct. 8-9	223	Edean Ihlanfeldt Invitational	T-7th of 67	2nd of 5
Feb. 23-25	220	Allstate Sugarbowl Intercollegiate	T-37th of 90	2nd of 5
Mar. 3-4	230	Bruin Wave Invitational	T-29th of 90	3rd of 5
Mar. 24-26	234	Anuenue Spring Break Classic	T-55th of 88	5th of 5
April 14-15	222	Silverado Invitational	T-19th of 75	4th of 5
Monica Huang				
Date	Score	Tournament	Overall Place	Place on Team
Oct. 8-9	244	Edean Ihlanfeldt Invitational	T57th of 67	5th of 5 5th of 5



WASHINGTON WOMEN'S TEAM RECORDS (UPDATED AFTER 2012-13)

YEAR-BY-YEAR STROKE AVERAGE LEADER

SooBin Kim	71.9	2013
SooBin Kim	73.6	2012
Anya Alvarez	74.0	2011
Anya Alvarez	74.7	2010
Anya Alvarez	74.9	2009
Anya Alvarez	76.8	2008
Amber Prange	76.4	2007
Paige Mackenzie	72.8	2006
Paige Mackenzie	73.7	2005
Paige Mackenzie	74.1	2004
Louise Friberg	74.9	2003
Louise Friberg	74.9	2002
Kelli Kamimura	74.4	1999
Elisha Au	77.9	1998
Dodie Mazzuca	75.1	1997
Dodie Mazzuca	75.9	1996
Dodie Mazzuca	76.6	1995
Dodie Mazzuca	78.5	1994
Sheri Vincent	79.3	1993
Julie Barleson	78.3	1992
Sheri Vincent	79.8	1991
Jennifer Yockey	75.5	1990

SINGLE-SEASON STROKE AVERAGE

1.	Paige Mackenzie	72.79	2006
2.	SooBin Kim	73.55	2012
3.	Paige Mackenzie	73.69	2005
4.	Anya Alvarez	74.00	2011
5.	Paige Mackenzie	74.09	2004
6.	Kelli Kamimura	74.34	2001
7.	Kelli Kamimura	74.46	1999
8.	Sadena Parks	74.79	2012
9.	Louise Friberg	74.87	2003
	Anya Alvarez	74.87	2009
11.	Louise Friberg	74.91	2002
12.	Sung Ea Lee	75.03	2004
13.	Lindsay Morgan	75.08	2003
14.	Jennifer Yang	75.09	2012
15.	Dodie Mazzuca	75.12	1997
16.	Elisha Au	75.41	2000
17.	Kim Shin	75.47	2005
18.	Elisha Au	75.65	1999
19.	Sung Ea Lee	75.67	2005
20.	Paige Mackenzie	75.71	2002

CAREER TOP-10 FINISHES

1	Paige Mackenzie	24
2	Kelli Kamimura	20
3	Dodie Mazzuca	18
4	Louise Friberg	13
5. SooBin Kim	12	
6	Sung Ea Lee	11
7	Lindsay Morgan	10
	Anya Alvarez	10
9	Kerry Liedes	9
10	Nancy Kessler	8

SINGLE-SEASON TOP-10 FINISHES

1.	Dodie Mazzuca	8	1997
2.	Paige Mackenzie	7	2004
	SooBin Kim	7	2013
	Charlotte Thomas	7	2013
3.	Paige Mackenzie	6	2006
	Paige Mackenzie	6	2005
	Louise Friberg	6	2003
	Nancy Kessler	6	1988
7.	Kim Shin	5	2005
	Sung Ea Lee	5	2004
	Kelli Kamimura	5	2002
	Kelli Kamimura	5	2005
	Dodie Mazzuca	5	1996
	Kelli Kamimura	5	1999
	Louise Friberg	5	2002
	Lindsay Morgan	5	2003
	SooBin Kim	5	2012

ALL-TIME MEDALISTS

1.	Kelli Kamimura	4
	Patti Marquis	4
3.	Janine Getty	3
	Paige Mackenzie	3
	Dodie Mazzuca	3
	Mary Lou Mulflur	3
7.	Nancy Kessler	2
	Elisha Au	2
	Karinn Dickinson	2
	SooBin Kim	2
11.	Patty Abel	1
	Paula Gamble	1
	Jane Harris	1
	Peggy Lund	1
	Darcie Richmond	1
	Angie Pieroni	1
	Terri Pharr	1
	Susan Sanders	1
	Charlotte Thomas	1

CAREER ROUNDS PLAYED

1.	Paige Mackenzie	139
2.	Sung Ea Lee	133
3.	Louise Friberg	129
4.	Dodie Mazzuca	128
5.	Lindsay Morgan	127
6.	Kelli Kamimura	126
7.	Amber Prange	123
8.	Anya Alvarez	122
9.	Sadena Parks	120
10.	Andrea Cordova	118



SooBin Kim

ALL-TIME WASHINGTON HUSKY BESTS SCORES

INDIVIDUAL

BEST 18-HOLE SCORE

65 (-7) Dodie Mazzuca (third round), Sahalee CC, Redmond, WA, Oct. 9, 1997
66 (-6), Anya Alvarez (2nd round), Boulder Creek GC, Boulder Creek, Nev., Oct. 28, 2008
66 (-6), Sadena Parks (2nd round), Washington National, Auburn, Wash., May 6, 2011
66 (-6), Kelli Kamimura (3rd round), Corral de Tierra CC, Salinas, Calif., March 7, 2001
66 (-5), SooBin Kim (1st round), Stanford Golf Club, Stanford, Calif., Oct. 14, 2011
66 (-5), Sadena Parks (1st round), Stanford Golf Club, Stanford, Calif., Oct. 14, 2011

BEST FIRST ROUND

66 (-5), SooBin Kim, Stanford Golf Club, Stanford, Calif., Oct. 14, 2011
66 (-5), Sadena Parks, Stanford Golf Club, Stanford, Calif., Oct. 14, 2011
67 (-3), Paige Mackenzie, Stanford, Calif., Oct. 15, 2004
67 (-4), Kelli Kamimura, Trysting Tree GC, Corvallis, Ore., Oct. 11, 1998

BEST SECOND ROUND SCORE

66 (-6), Anya Alvarez, Boulder Creek GC, Boulder Creek, Nev., Oct. 28, 2008
66 (-6), Sadena Parks, Washington National, Auburn, Wash., May 6, 2011
67 (-3), Anya Alvarez, Karsten Golf Course, Tempe, Ariz., April 6, 2008

BEST THIRD ROUNDS SCORE

65 (-7), Dodie Mazzuca, Sahalee CC, Redmond, Wash., Oct. 9, 1997
66 (-6), Kelli Kamimura, Corral de Tierra CC, Salinas, Calif., March 7, 2001
67 (-5), Anya Alvarez, Boulder Creek GC, Boulder Creek, Nev., Mar. 11, 2009

BEST THREE ROUNDS SCORE

200 (-13), SooBin Kim, Stanford GC, Stanford, Calif., Oct. 14-16, 2011
203 (-13), Anya Alvarez, Boulder Creek GC, Boulder Creek, Nev., Oct. 27-29, 2008
205 (-11), SooBin Kim, Sahalee CC, Sammamish, Wash., Oct. 8-10, 2012
208 (-8), Paige Mackenzie, Washington National, Auburn, Wash., May 11-13, 2006
209 (-7), Kelli Kamimura, Corral de Tierra CC, Salinas, Calif., March 5-7, 2001

TEAM

BEST 18-HOLE SCORE

277 (-7), Stanford Intercollegiate, Stanford GC, Stanford, Calif., Oct. 11, 2011
280 (-8), Stanford Intercollegiate, Stanford GC, Stanford, Calif., Oct. 17, 2003
280 (-8), Stanford Intercollegiate, Stanford GC, Stanford, Calif., Oct. 18, 2003
280 (-8), Las Vegas Founders Collegiate, Anthem CC, Las Vegas, NV, Nov. 1-3, 2004

BEST FIRST ROUND

277 (-7), Stanford Intercollegiate, Stanford GC, Stanford, Calif., Oct. 11, 2011
280 (-8), Stanford Intercollegiate, Stanford GC, Stanford, Calif., Oct. 17, 2003

BEST SECOND ROUND SCORE

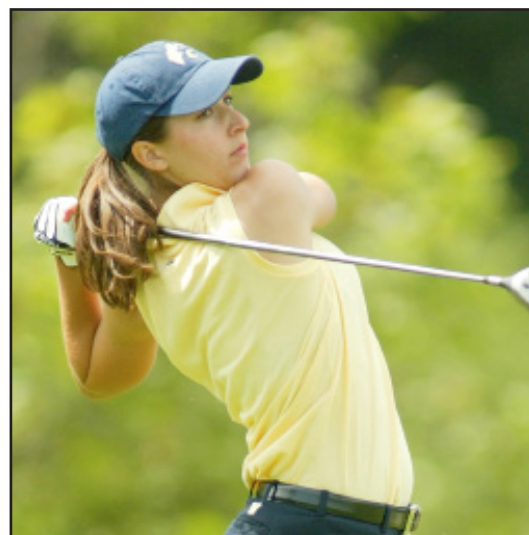
280 (-8), Stanford Intercollegiate, Stanford GC, Stanford, Calif., Oct. 18, 2003
280 (-8), OSU Invitational, Trysting Tree, Corvallis, Ore., Sept. 17, 2012

BEST THIRD ROUNDS SCORE

280 (-8), Las Vegas Founders Collegiate, Anthem CC, Las Vegas, NV, Nov. 1-3, 2004

BEST THREE ROUNDS SCORE

-14 (280-280-290-850) Stanford Intercollegiate, Stanford Golf Course, Stanford, Calif., Oct. 18, 2003



Paige Mackenzie



Dodie Mazzuca



Anya Alvarez

HUSKIES IN THE POST-SEASON

TEAM

Pac-12 Championships

Year	Place	Team Scoring
2013	2nd	293-291-293-877
1988	3rd	315-303-314-312-1244
2002	5th	309-303-297-909
2001	5th	302-300-288-890
2010	5th	296-314-296-906
1996	5th	301-302-308-911
1998	5th	303-305-309-917
1990	5th	308-312-313-933
2006	6th	308-300-302-910
2005	6th	298-304-295-897
2004	6th	309-310-311-930
1995	6th	306-298-300-904
1999	6th	309-301-305-915
1991	6th	319-312-329-960
1989	6th	327-340-329-996
1987	6th	317-320-302-312-1251
1997	7th	304-308-317-929
1992	7th	315-322-301-938
1993	7th	324-311-311-946
1994	7th	322-324-325-971
2007	7th	313-308-317-938
2012	8th	315-294-300-909
2011	8th	307-299-308-914
2000	8th	311-305-302-918
2003	8th	300-314-315-929
2009	9th	305-301-307-913
2008	9th	310-308-318-936

NCAA Regionals

Year	Place	Team Scoring
2006	3rd	288-303-297-888
2004	4th	298-309-285-892
2002	6th	310-303-291-904
1995	6th	303-306-298-907
2011	7th	304-294-307-905
2001	7th	308-302-304-914
2005	8th	306-298-296-900
1998	9th	300-304-307-911
2009	10th	308-300-319-927
1997	11th	289-302-306-897
1999	12th	315-310-307-932
1993	13th	298-299-303-900
2012	13th	296-303-305-904
2003	13th	311-318-294-923
1996	13th	303-333-329-965
2010	17th	305-295-307-907
2000	17th	321-298-297-916
2008	17th	312-310-310-932
1994	18th	323-313-308-944

NCAA Championships

Year	Place	Team Scoring
2006	6th	305-304-293-300-1202
2004	6th	305-298-297-284-1184
1978	9th	
2005	14th	292-314-296-299-1201
1977	14th	1308
2011	16th	312-307-297-293-1209 (+57)
2001	16th	315-305-310-296-1226
1995	16th	312-303-307-312-1234
1998	18th	303-298-314-314-1229
1997	18th	321-311-311-324-1267
2002	20th	302-297-305-299-1203

INDIVIDUAL

Pac-10 Championships (Top-10 Finishes)

Year	Name	Place	Scoring
2006	Paige Mackenzie	1st	71-71-69-211
2001	Kelli Kamimura	3rd	74-71-70-215
1993	Angie Burkett	4th	77-74-73-224
1988	Nancy Kessler	4th	79-72-77-72-300
2002	Lindsay Morgan	6th	76-72-74-222
2000	Elisha Au	6th	76-74-72-222
2002	Louise Friberg	7th	74-79-70-223
1997	Dodie Mazzuca	7th	72-74-74-220
2003	Sung Ea Lee	8th	71-76-76-223
1994	Dodie Mazzuca	8th	79-75-78-232
2005	Amber Prange	9th	73-74-71-218
1991	Angie Pieroni	9th	82-72-80-234
2004	Sung Ea Lee	10th	77-77-75-229

NCAA Regionals (Top-25 Finishes)

Year	Name	Place	Scoring
2006	Paige Mackenzie (W)	1st	68-69-71-208
1997	Dodie Mazzuca (W)	1st	69-71-71-211
2006	Amber Prange (W)	5th	69-77-74-220
2004	Paige Mackenzie (W)	7th	75-75-67-217
2003	Lindsay Morgan (W)	4th	73-76-68-217
2002	Louise Friberg (W)	8th	76-73-71-220
2001	Kelli Kamimura (W)	8th	74-69-77-220
2003	Sung Ea Lee (W)	10th	75-73-72-220
1995	Dodie Mazzuca (W)	12th	77-71-74-222
2004	Sung Ea Lee (W)	15th	72-76-73-221
1996	Dodie Mazzuca (W)	16th	73-78-78-229
2001	Louise Friberg (W)	18th	75-75-75-225
2005	Amber Prange (E)	19th	74-75-72-221
2009	Sadena Parks (C)	20th	75-76-78-229
1999	Elisha Au (W)	22nd	78-76-73-227
2011	Sadena Parks (W)	T22nd	81-66-77-224
1998	Elisha Au (W)	23rd	78-73-75-226
1999	Kelli Kamimura (W)	25th	79-76-73-228
2011	Anya Alvarez (W)	T25th	70-78-78-226

(W = West Regional / E = East Regional / C = Central Region)

NCAA Championships

Year	Name	Place	Scoring
2006	Paige Mackenzie	8th	76-73-72-72-293
2005	Paige Mackenzie	10th	72-74-73-74-292
2004	Paige Mackenzie	11th	73-78-69-68-288
2005	Amber Prange	16th	72-77-72-75-296
2002	Paige Mackenzie	25th	76-70-76-72-294
2011	Kelli Bowers	T26th	78-74-73-72-297
2001	Kelli Kamimura	29th	79-77-73-70-299
2011	Anya Alvarez	T32nd	74-76-72-76-298
1988	Nancy Kessler	32nd	74-73-77-76-300
2006	Sung Ea Lee	33rd	75-75-72-78-300
1995	Angie Burkett	33rd	78-75-73-76-302
1998	Elisha Au	42nd	71-74-82-76-303
1997	Dodie Mazzuca	47th	81-75-74-75-305
1996	Dodie Mazzuca	48th	85-77-85-76-323
1995	Dodie Mazzuca	55th	73-77-77-81-308
1998	Andrea Cordova	62nd	72-77-79-80-309
2006	Amber Prange	64th	78-76-76-76-306
2003	Lindsay Morgan	66th	80-86-73-73-312
2004	Lindsay Morgan	68th	78-75-79-70-302
2004	Sung Ea Lee	69th	76-73-77-77-303
1997	Andrea Cordova	69th	79-77-78-78-312
1995	Caroline Spiegelberg	79th	83-71-79-82-315
2001	Louise Friberg	77th	81-79-77-74-311

HUSKY ACCOLADES

NGCA All-American

2012	SooBin Kim (HM)
2006	Paige Mackenzie (1st)
2005	Paige Mackenzie (HM)
2004	Sung Ea Lee (HM)
	Paige Mackenzie (2nd)
2003	Lindsay Morgan
2001	Kelli Kamimura
1999	Kelli Kamimura
1997	Dodie Mazzuca
1996	Dodie Mazzuca
1988	Nancy Kessler
1978	Robin Walton

Pac-12 Coach of the Year

1999	Mary Lou Mulflur
1988	Mary Lou Mulflur

All-Pac-12

2013	SooBin Kim, 1st Team
	Charlotte Thomas, 2nd Team
2012	SooBin Kim, 2nd Team
2011	Anya Alvarez, HM
2010	Anya Alvarez, HM
2009	Anya Alvarez, HM
2006	Paige Mackenzie, 1st Team
2005	Paige Mackenzie, 1st Team
2004	Paige Mackenzie, 1st Team
	Sung Ea Lee, 2nd Team
2003	Louise Friberg, 1st Team
	Lindsay Morgan, 2nd Team
2002	Louise Friberg, 2nd Team

2001	Kelli Kamimura, 2nd Team
2000	Kelli Kamimura, 1st Team
1999	Elisha Au, 2nd Team
1997	Kelli Kamimura, 1st Team
1996	Dodie Mazzuca, 1st Team
1995	Dodie Mazzuca, 1st Team
1988	Nancy Kessler, 1st Team

Scholar All-Americans

2006	Paige Mackenzie
2005	Paige Mackenzie
2004	Paige Mackenzie
2003	Michelle Grafos
2002	Paige Mackenzie
	Michelle Grafos
2001	Michelle Grafos
1999	Paola Bellotti
1998	Paola Bellotti
1997	Dodie Mazzuca
	Emily Martin
1996	Dodie Mazzuca
	Emily Martin
	Meg Maedo
1995	Emily Martin
	Meg Maedo
1994	Lee Kurlmel
1993	Val McKie
1992	Anne Huizinga
1990	Carrie Eliason
1988	Michelle Watson
1987	Paula Gamble

Pac-12 All-Academic

2008	Molly Boyle, HM
2007	Amber Prange, 2nd Team
	Molly Boyle, HM
	Kim Shin, HM
2006	Paige Mackenzie, 1st Team
	Amber Brange, HM
	Kim Shin, HM
2005	Paige Mackenzie, 1st Team
2004	Paige Mackenzie, 2nd Team
2003	Michelle Grafos, 1st Team
	Paige Mackenzie, 2nd Team
2002	Michelle Grafos, 1st Team
	Lindsay Morgan, 2nd Team
1999	Jennifer Stapleton, 2nd Team
1998	Paola Bellotti, 2nd Team
1997	Dodie Mazzuca, 1st Team
	Emily Martin, 1st Team
1996	Emily Martin, 1st Team
	Dodie Mazzuca, 1st Team
1995	Emily Martin, 2nd Team
	Dodie Mazzuca, 1st Team
1994	Lee Kurlmel, 2nd Team
1993	Angie Pieroni, 2nd Team
	Val McKie, 2nd Team
1992	Angie Pieroni, 2nd Team

ALL-TIME HUSKY MEDALISTS

SooBin Kim

205 - Edean Ihlanfeldt Invitational
Sammamish, Wash.
Sahalee CC
Oct. 8-10, 2012

Charlotte Thomas

211 - Oregon State Invitational
Corvallis, Ore.
Trystin Tree Golf Course
Sept. 17-18, 2012

SooBin Kim

200 - Stanford Intercollegiate
Palo Alto, Calif.
Stanford Golf Course
Oct. 11-13, 2011

Darcie Richmond

144 - Gonzaga Spring Regional
Spokane, Wash.
Liberty Lake Golf Course
April 10, 2011

Karinn Dickinson

220 - Washington State Invite
Pullman, Wash.
Palouse Ridge Golf Course
Sept. 10-12, 2010

Karinn Dickinson

142 - Peg Barnard Collegiate
Palo Alto, Calif.
Stanford Golf Course
April 11-12, 2008

Paige Mackenzie

208-NCAA West Regional
Auburn, Wash.
Washington National
May 11-13, 2006

Paige Mackenzie

211-Pac-10 Championships
Oro Valley, Ariz.
Oro Valley Country Club
April 24-26, 2006

Paige Mackenzie

214-Kent Youel Invitational
Oahu, Hawaii
Kapolei Golf Course
Nov. 4-5, 2003

Elisha Au

221-Rainbow Wahine Classic
Oahu, Hawaii
Kapolei Golf Course
Oct. 31-Nov. 1, 2000

Kelli Kamimura

138-Bay Area Classic
Vallejo, Calif.
Hiddenbrooke CC
Feb. 26-27, 2001

Kelli Kamimura

209-Spartan Invitational
Salinas, Calif.
Corral de Dierra CC
Mar. 5-7, 2001

Kelli Kamimura

213-Northwest Invitational
Corvallis, Ore.
Trystin Tree Golf Club
Oct. 11-13, 1998

Elisha Au

215-Stanford Intercollegiate
Palo Alto, Calif.
Stanford Golf Course
Oct. 23-25, 1998

Kelli Kamimura

142-Bay Area Classic
Vallejo, Calif.
Blue Springs CC
Mar. 1-2, 1999

Dodie Mazzuca

150-BYU Invitational
Provo, Utah
Hobble Creek
Sept. 16-17, 1996

Dodie Mazzuca

213-Edean Ihlanfeldt Invite.
Redmond, Wash.
Sahalee CC
Oct. 7-9, 1996

Dodie Mazzuca

211-NCAA West Regional
Tucson, Ariz.
Randolph Park North Course
May 8-10, 1997

Angie Pieroni

226-Corvallis, Ore.
Oregon State Invitational
Trystin Tree Golf Course
Apr. 10-11, 1992

Nancy Kessler

221-BYU Invitational
Provo, Utah
Hobble Creek Golf Course
Sept. 21-23, 1987

Nancy Kessler

228-Edean Ihlanfeldt Invite.
Redmond, Wash.
Sahalee CC
Oct. 12-14, 1987

Peggy Lund

235-Gearhart Invitational
Gearhart, Ore.
Gearhart Golf Course
Apr. 24-26, 1986

Paula Gamble

159-WSU Women's Invite.
Pullman, Wash.
WSU Golf Course
Oct. 15-16, 1983

Janine Getty

230-Gearhart Invitational
Gearhart, Ore.
Gearhart CC
Apr. 28-30

Jane Harris

224-Weber State Invite.
Sept. 23-25, 1983

Janine Getty

160-Oregon State Invite.
Corvallis, Ore.
Corvallis CC
Apr. 29-30, 1983

Tarie Pharr

218-Oregon State Invite.
Corvallis, Ore.
Corvallis CC
Oct. 11-13, 1981

Janine Getty

237-Oregon State Invite
Corvallis, Ore.
Springhill/Tokatee/Corvallis CC
Apr. 17-19, 1982

Susan Sanders

236-Portland Invite
Portland, Ore.
Colwood, Waverly, Gresham Golf Club
Apr. 5-7, 1981

Mary Lou Mulflur

155-U. Of British Columbia
1979

Patty Abel

236-Washington Invitational
Seattle, Wash.-1979

Mary Lou Mulflur

224-BYU Invitational
Provo, Utah
1978

Patti Marquis

157-U of British Columbia Dual
Vancouver, B.C.
Point Grey Golf Course
Mar. 21-22, 1977

Patti Marquis

237-UW Invitational
Bellevue, Wash.
Glendale CC
Apr. 18-20, 1977

Patti Marquis

228-UW v OU & OSU
Portland, Ore.
Royal Oaks/Riverside/Colwood CC
Apr. 22-24, 1977

Patti Marquis

229-Northwest Collegiate Invite.
Gearhart, Ore.
Gearhart CC
May 1-3, 1977

Mary Lou Mulflur

225-Daisy Duck Invitational
Eugene, Ore.
Emerald Valley CC
May 16-18, 1977

ALL-TIME TEAM EVENT CHAMPIONSHIPS

Tournament	Location	Course	Date
Edean Ihlanfeldt Invitational	Sammamish, WA	Sahalee Country Club	Oct. 8-10, 2012
Oregon State Invitational	Corvallis, OR	Trysting Tree Golf Club	Sept. 17-18, 2012
Cougar Cup	Pullman, WA	Palouse Ridge Golf Course	Sept. 19-20, 2011
Peg Barnard California Collegiate	Stanford, CA	Stanford Golf Course	April 9-10, 2005
Bay Area Classic	San Jose, CA	Boulder Ridge Golf Club	Feb. 16-17, 2004
Peg Barnard California Collegiate	Stanford, CA	Stanford Golf Course	April 13-14, 2002
Oregon Duck Invitational	Lebanon, OR	Mallard Creek Golf Club	Mar. 28-29, 2002
Bay Area Classic	Vallejo, CA.	Hiddenbrooke Country Club	Feb. 26-27, 2001
California Collegiate	Stanford, CA	Stanford Golf Course	Apr. 15-16, 2000
Bryan National Collegiate	Browns Summit, NC	Bryan Park Champions G.C.	Mar. 26-28, 1999
Northwest Invitational	Corvallis, OR	Trysting Tree Golf Club	Oct. 11-13, 1998
BYU Invitational	Provo, UT	Hobble Creek	Sept. 16-17, 1996
Santa Clara Colby Invitational	Monterey, CA	Old Del Monte Golf Club	Feb. 12-13, 1996
Rolex Northwest Collegiate	Corvallis, OR	Trysting Tree Golf Club	Sept. 25-26, 1995
OSU/Nike Invitational	Corvallis, OR	Trysting Tree Golf Club	Apr. 9-10, 1993
Utah-Dixie Classic	St. George, UT	Sunbrook Golf Club	Mar. 9-10, 1992
Oregon Invitational	Eugene, OR	Eugene Country Club	Mar. 6-8, 1989
Gearhart Invitational	Gearhart, OR	Gearhart Golf Course	Apr. 24-26, 1986
Gearhart Invitational	Gearhart, OR	Gearhart Golf Course	Apr. 28-30, 1984
Washington State Women's Invite	Pullman, WA	WSU Golf Course	Oct. 15-16, 1983
Mike Farrell-Lady Wildcat Invitational	Ogden, UT	Wolf Creek Country Club	Sept. 23-24, 1983
Oregon State Invitational	Corvallis, OR	Corvallis Country Club	Apr. 29-30, 1983
Oregon State Invitational	Corvallis, OR	Springhill, Tokatee, Corvallis Golf Courses	Apr. 17-19, 1982
Oregon State Invitational	Corvallis, OR	Corvallis Country Club	Oct. 11-13, 1981
Portland Invitational	Portland, OR	Colwood, Waverly, Gresham Golf Courses	Apr. 5-7, 1981
U. of British Columbia Dual			1979
Washington Invitational	Seattle, WA		1979
UW vs. Oregon & OSU	Portland, OR	Royal Oaks, Riverside, Colwood Country Clubs	Apr. 24-26., 1977
UW Invitational Bellevue, WA		Glendale Country Club	Apr. 18-20, 1977
U. of British Columbia Dual	Vancouver, BC	Point Grey Golf Course	Mar. 21-22, 1977
Daisy Duck Invitational	Eugene, OR	Emerald Valley Country Club	May 16-18, 1977
Northwest Collegiate Invitational	Gearhart, OR	Gearhart Country Club	May 1-3, 1977



The 2006 Huskies finished sixth at the NCAA championship, equaling the best finish ever in UW history.

ALL-TIME LETTERWINNERS

A

Abel, Patti 1979
Alvarez, Anya 2008, 09, 10, 11
Aoki, Christine 1975, 76
Aronsson, Molly 2007, 08, 09, 10
Au, Elisha 1998, 99, 2000, 01

B

Bartleson, Julie 1989, 90, 91, 92
Bellotti, Paola 1996, 97, 98, 99
Bickerton, Ashley 2004, 05, 06
Bowers, Kelli 2011, 12, 13
Boyle, Molly 2007, 08, 09
Britt, Elizabeth 1985, 86, 87, 88
Burkett, Angie 1993, 94, 95, 96
Burns, Heidi 1989, 90, 91

C

Choi, A Ram 2011
Clark, Bianca 2001, 02
Colyer, Alison 1992, 93
Cooper, Mendy 1997, 98, 2000
Cordova, Andrea 1997, 98, 99, 2000

D

Dickinson, Karinn 2008, 09, 10, 11
Drake, Stephanie 1979, 80, 81, 82

E

Eliason, Carrie 1988, 89, 90, 91

F

Ferrero, Nicole 2008, 09, 10, 11
Foster, Janice 1976, 77, 78, 79
Friberg, Louise 2000, 01, 02, 03

G

Galmanis, Kimberly 1989
Gamble, Paula 1984, 85, 86, 87
Getty, Janine 1981, 82, 83, 84
Gonder, Angie 1991
Grafos, Michelle 2000, 01, 02, 03

H

Harris, Jane 1982, 83
Hildreth, Susan 1983, 84, 85, 86
Huang, Monica 2013
Huizinga, Anne 1992, 93

K

Kamimura, Kelli 1999, 2000, 01, 02
Kessler, Nancy 1985, 86, 87, 88
Kim, SooBin 2012, 13
Krieger, Tina 1984, 85, 86, 87
Kurmel, Lee 1992, 93, 94

L

Lee, Sung Ea 2003, 04, 05, 06
Lavelle, Keely 2011
Liedes, Jennifer 2012

Liedes, Kerry 1982, 83, 84, 85
Lippitt, Sue 1998
Litton, Janis 1976, 77
Lund, Katherine 1985, 86, 87, 88
Luo, Cathy 2013

M

Mackenzie, Paige 2002, 04, 05, 06
Maedo, Megan 1994, 95, 96
Marquis, Patricia 1975, 76, 77
Martin, Emily 1994, 95, 96, 97
Martin, Kari 2000
Mazzuca, Dodie 1994, 95, 96, 97
McCracken, Courtney 2004, 05, 06
McCusker, Kellee 1983
McKie, Val 1992, 93
Morgan, Lindsay 2001, 02, 03, 04
Mulflur, Mary Lou 77, 78, 79, 80

O

Okino, Cyd 2012, 13
Olexio, Donna 1988, 89, 90, 91

P

Parks, Sadena 2009, 10, 11, 12
Peck, Nancy 1980, 81
Pieroni, Angie 1991, 92, 93
Porambo, Lisa 1975, 76, 77
Prange, Amber 2004, 05, 06, 07

R

Richmond, Darcie 2009, 10, 11, 12

S

Sanders, Susan 1980, 81
Saucier, Katie 2008, 09, 10, 11
Shin, Kim 2005, 06, 07
Simkins, Sonja 1987
Spiegelberg, Caroline 93, 94, 95, 96
Stapleton, Jennifer 1997, 98, 99

T

Tallman, Brittany 2010, 11, 12, 13
Thorlakson, Elisabeth 1975, 76, 77
Thomas, Charlotte 2013
Thompson, Greta 1979

V

Vincent, Sheri 1990, 91, 92, 93
W Wang, Amy 2004, 05, 06
Watson, Michelle 1985, 86, 87, 88
Wellman, Janis 1975

Y

Yabe, Kim 1995, 96, 98
Yang, Jennifer 2012, 13
Yockey, Jennifer 1988, 89, 90, 91
Yoon, Christina 2007, 08, 09, 10



Louise Friberg



Kelli Kamimura



Lindsay Morgan